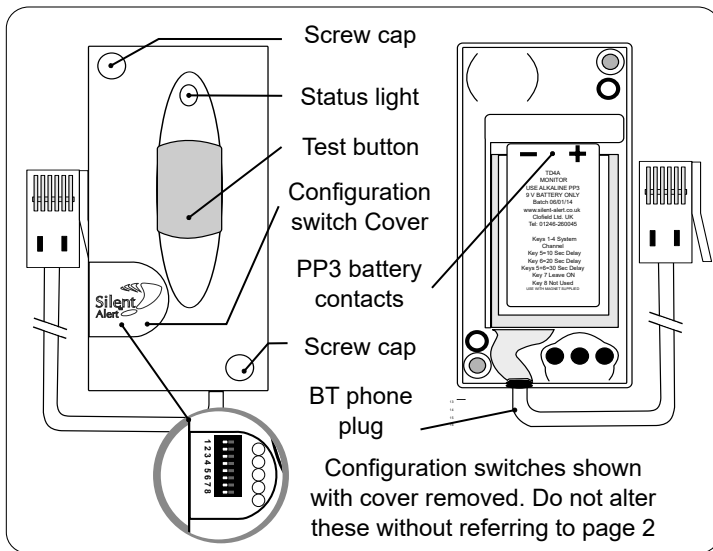


Quick start guide TD4A-2227-UK

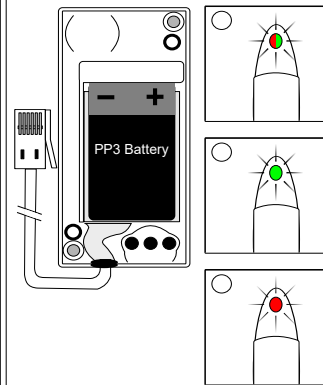
Mini telephone monitor



Any questions? Call us on 01246 450789



1. Install a 9 volt PP3 alkaline or lithium battery making sure to observe the correct polarity.

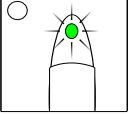


When a battery is first fitted the indicator light will flash red then green a few times.

The light will then flash green several times to show the battery voltage.
9 flashes = 9Volts in the battery.

If the light flashes red at this point the battery is flat and will need to be replaced.

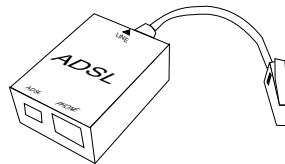
To repeat the battery check remove the battery, press the test button then re-insert the battery to start the sequence again.

2.  Press and hold the test button on the front of the monitor for around 10 seconds.

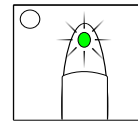
The light will shine green for a few seconds.
Check the Pager or SignWave receives a signal.

If you have a system channel code set on the receiver refer to the advanced settings overleaf.

3. Plug the mini monitor into a telephone socket. If the line is broadband enabled the monitor should be first connected to an ADSL microfilter (not supplied)



4. Ring the phone line the monitor is connected to.



The light will shine green when a call is detected and the monitor will transmit.

WARNING! Your device and its accessories are not toys. They may contain small parts. Keep them out of the reach of small children.

