

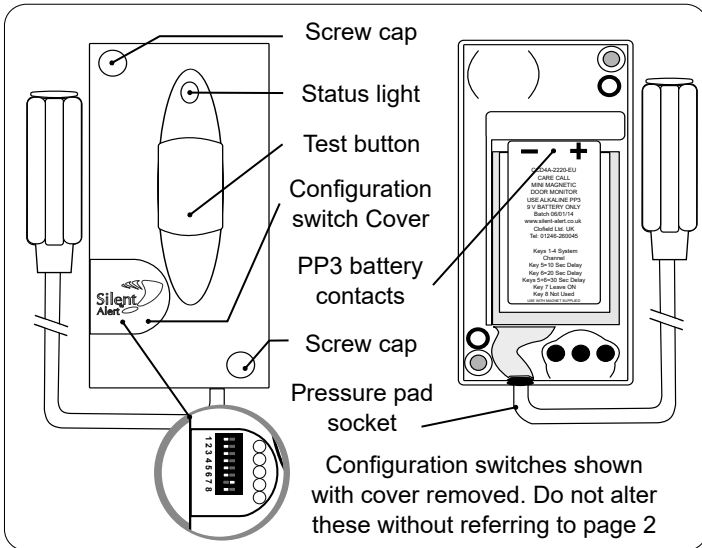
Quick start guide CL4A-2212-EU

Mini Chair Leaving Monitor



PM5 Activation

Any questions? Call us on 01246 450789



1. Install a 9 volt PP3 alkaline or lithium battery making sure to observe the correct polarity.

When a battery is first fitted the indicator light will flash red then green a few times.

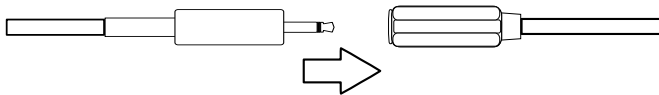
The light will then will flash green several times to show the battery voltage.
9 flashes = 9Volts in the battery.

If the light flashes red at this point the battery is flat and will need to be replaced.

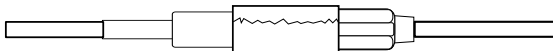
To repeat the battery check remove the battery, press the test button then re-insert the battery to start the sequence again.

2. The monitor is activated using an under carpet pressure pad (PM2).

Plug the PM2 plug into the socket on the monitor.

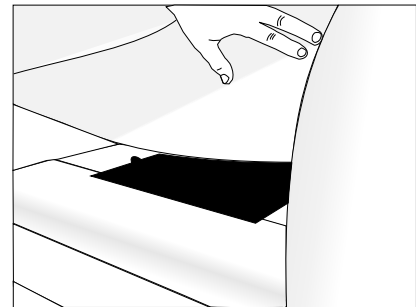


The connection can be taped for added security if required.



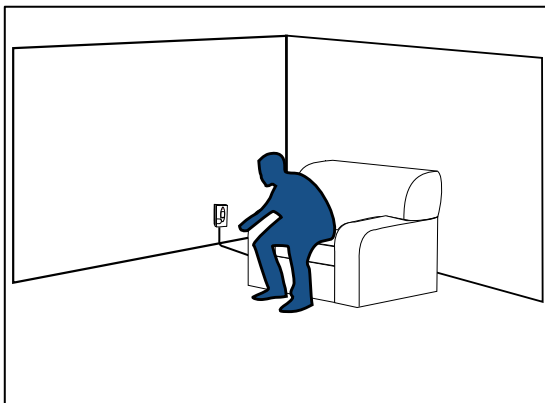
The monitor may transmit the first time the connection is made, this is normal.

3. Place the pad under the chair cushion ensuring the pad is not folded.



When installing the pad make sure the cable can't cause a trip hazard.

4. As the user stands up the monitor will send a signal to the Pager or SignWave.



Advanced settings CL4A-2212-EU

Mini Chair Leaving Monitor



Any questions? Call us on 01246 450789

It is possible for the monitor to light up a different key on the Pager or SignWave. This allows more than one chair leaving monitor to be used on a SA3000 system.

Move the relevant key to the right .

Press the test button and check the correct event is received by the Pager or SignWave.

Key 7 must be left on.

The diagram illustrates the process of moving a key to the right. It shows four keypads, each with a different icon above it: a keypad icon, a person icon, a house and car icon, and a flame icon. Red arrows point from the first keypad to the second, second to third, and third to fourth. Each keypad has keys 1-8, with key 7 always lit.

Changing the system channel code

NOTE. In most cases it is not necessary to change the system code. However, when one or more systems are in close proximity, system codes can be used to avoid interference from other SA3000 systems using up to a maximum of 16 channels.

The monitor is supplied with no system code switches set (system code 1). For reference this is the factory setting should you need to re-set the unit.

System codes can be set using key switches 1 - 4.

The diagram to the right shows the 16 possible combinations.

KEY 7 MUST BE LEFT ON

Be sure that the same system code is set on the receiver to be used and any other monitoring options in that system.

The diagram shows 16 keypads, numbered 1 to 16, representing different system code combinations. Each keypad has keys 1-8, with key 7 always lit. The combinations are as follows:

System Code	Key 1	Key 2	Key 3	Key 4	Key 5	Key 6	Key 7	Key 8
1	Off	Off	Off	Off	Off	Off	On	Off
2	On	Off	Off	Off	Off	Off	On	Off
3	Off	On	Off	Off	Off	Off	On	Off
4	Off	Off	On	Off	Off	Off	On	Off
5	Off	Off	Off	On	Off	Off	On	Off
6	Off	Off	Off	Off	On	Off	On	Off
7	Off	Off	Off	Off	Off	On	On	Off
8	Off	Off	Off	Off	Off	Off	On	On
9	On	On	Off	Off	Off	Off	On	Off
10	On	Off	On	Off	Off	Off	On	Off
11	On	Off	Off	On	Off	Off	On	Off
12	On	Off	Off	Off	On	Off	On	Off
13	On	Off	Off	Off	Off	On	On	Off
14	On	Off	Off	Off	Off	Off	On	On
15	On	On	On	Off	Off	Off	On	Off
16	On	On	On	On	Off	Off	On	Off