

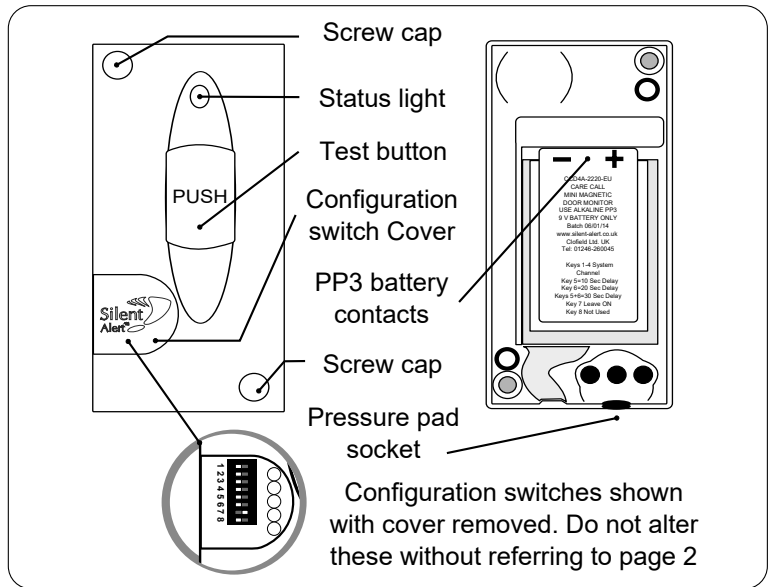
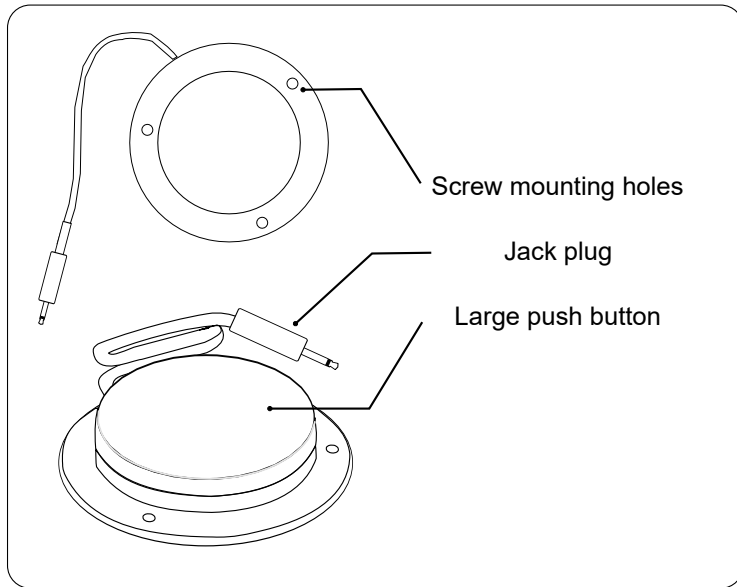
Quick start guide jelly bean switch

Care Call Mini Monitor with socket

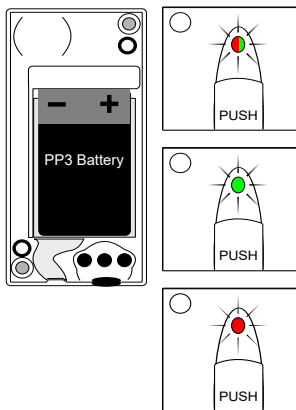


Jelly bean switch activation

Any questions? Call us on 01246 450789



2. Install a 9 volt PP3 alkaline or lithium battery making sure to observe the correct polarity.



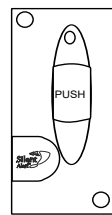
When a battery is first fitted the indicator light will flash red then green a few times then light solid green & pause briefly.

The light will then will flash green several times to show the battery voltage.
9 flashes = 9Volts in the battery.

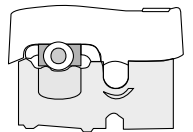
If the light flashes red at this point the battery is flat and will need to be replaced.

To repeat the battery check remove the battery, press the test button then re-insert the battery to start the sequence again.

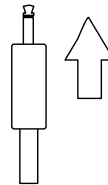
3. The monitor is activated using a Jelly Bean switch.



Plug the Jelly Bean plug into the socket on the monitor

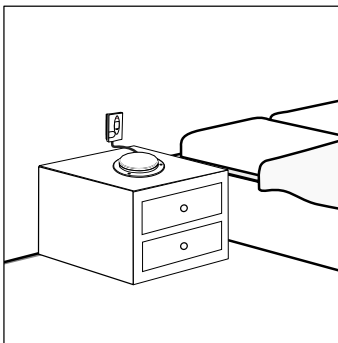


The monitor may transmit the first time the connection is made, this is normal.



The 3.5mm jack socket will trigger the unit on a short circuit only.

4. Place the switch on a bedside table or similar flat, stable surface.



WARNING

When installing the switch, make sure the cable can't cause a trip hazard.

5. Alternatively the switch could be mounted to a wall using the mounting holes in the base.

