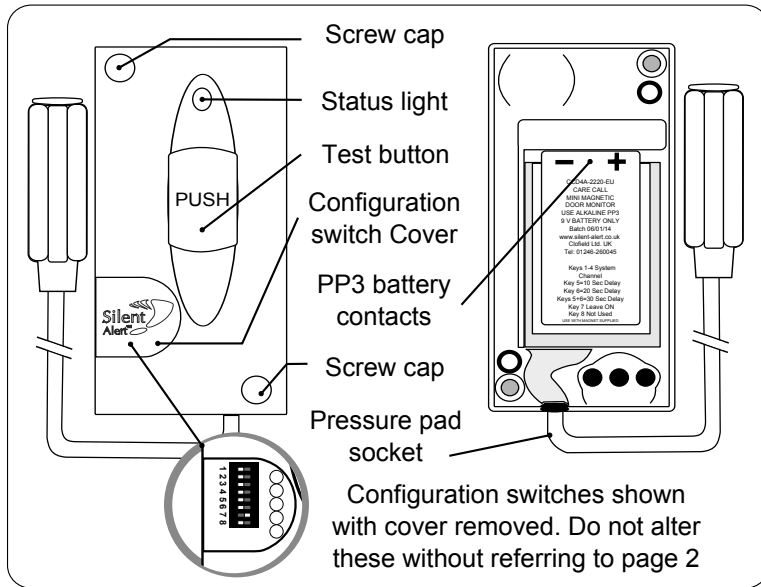
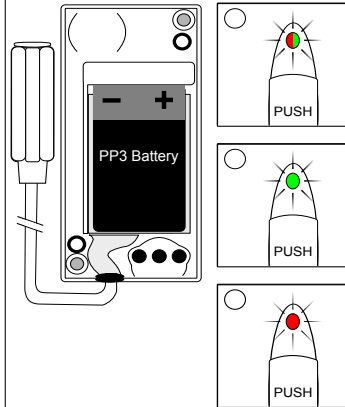


PM2 Activation

Any questions? Call us on 01246 450789



1. Install a 9 volt PP3 alkaline or lithium battery making sure to observe the correct polarity.



When a battery is first fitted the indicator light will flash red then green a few times then light solid green & pause briefly.

The light will then will flash green several times to show the battery voltage.

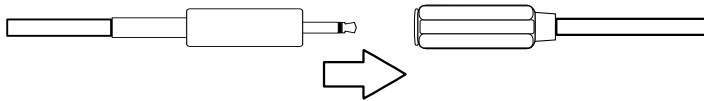
9 flashes = 9Volts in the battery.

If the light flashes red at this point the battery is flat and will need to be replaced.

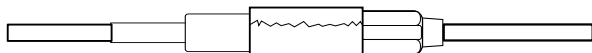
To repeat the battery check remove the battery, press the test button then re-insert the battery to start the sequence again.

2. The monitor is activated using an under carpet pressure pad (PM2).

Plug the PM2 plug into the socket on the monitor.

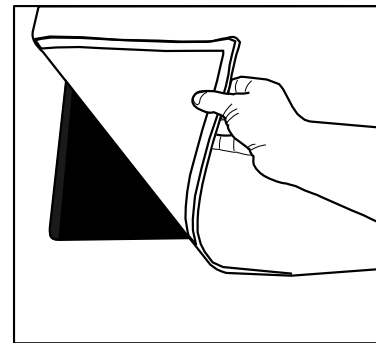


The connection can be taped for added security if required.



The monitor may transmit the first time the connection is made, this is normal.

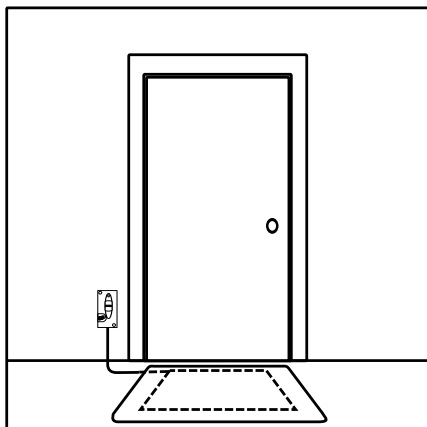
3. Place the pad under the carpet ensuring the pad is not folded.



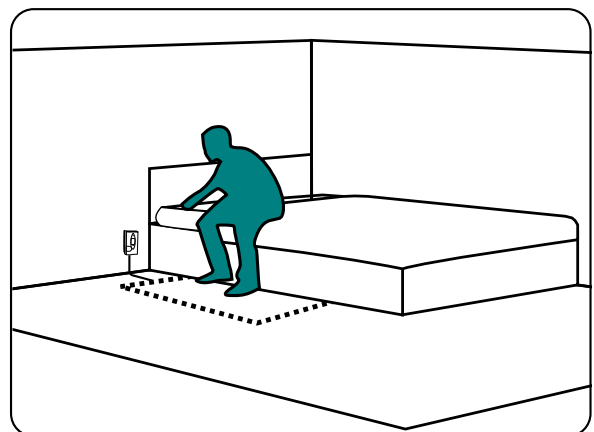
WARNING

When installing the pad make sure the cable can't cause a trip hazard.

4. The pad can be placed under a rug at a doorway or beside a bed



5. As the user stands on the carpet directly above the pad the monitor will send a signal to the Pager or SignWave.

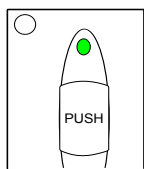
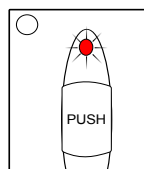
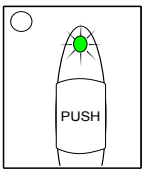
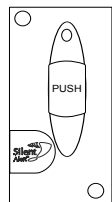


Any questions? Call us on 01246 450789

Changing the Zone

The unit will by default cause zone 1 on the pager or signwave to light.

- 1.** To change the zone you need to reset the monitor:

Remove the battery, press the push button, replace the battery.
- 2.**  After the flashing red/ green startup sequence the light will shine constant green.
- 3.**  Press and release the test button whilst the light is green. The light will flash red once, twice then three times and so on up to twelve.
- 4.**  To set the zone number, briefly press the test button at the desired number of flashes. The indicator light will flash green to confirm the selection.
- 5.**  The monitor will then perform the battery voltage level display and start as normal. Press the test button to confirm the correct zone has been selected.

Changing the system channel code

NOTE. In most cases it is not necessary to change the system code. However, when one or more systems are in close proximity, system codes can be used to avoid interference from other Care Call systems using up to a maximum of 16 channels.

The monitor is supplied with no system code switches set (system code 1). For reference this is the factory setting should you need to re-set the unit.

System codes can be set using key switches 1 - 4.

The diagram to the right shows the 16 possible combinations.

Be sure that the same system code is set on the receiver to be used and any other monitoring options in that system.

