

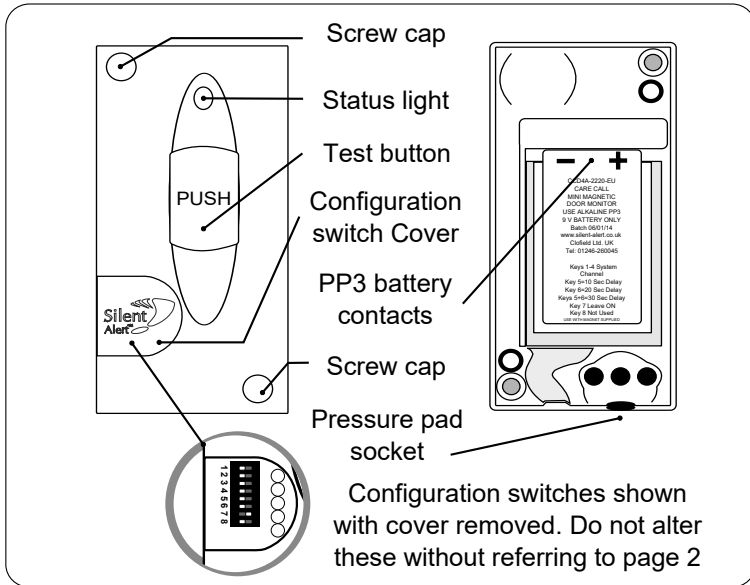
# Quick start guide CL4A-2212-EU MKII

## Mini Chair Leaving Monitor



### PM5 Activation

Any questions? Call us on free phone 0800 387 397



**1.** Install a 9 volt PP3 alkaline or lithium battery making sure to observe the correct polarity.

When a battery is first fitted the indicator light will flash red then green a few times.

The light will then will flash green several times to show the battery voltage.  
9 flashes = 9Volts in the battery.

If the light flashes red at this point the battery is flat and will need to be replaced.

To repeat the battery check remove the battery, press the test button then re-insert the battery to start the sequence again.

**2.** The monitor is activated using a chair pressure pad (PM5).

Plug the PM5 plug into the socket on the monitor

The monitor may transmit the first time the connection is made, this is normal.

The 3.5mm jack socket will trigger the unit on a short circuit only.

**3.** Place the pad under the chair cushion ensuring the pad is not folded.

When installing the pad make sure the cable can't cause a trip hazard.

**4.** As the user stands up the monitor will send a signal to the Pager or SignWave.

**5. Fidget delay**

To prevent the unit triggering when the user changes position in their seat the monitor has a 'fidget' delay.

If the person releases the pressure from the pad a timer will start, this is indicated by the green light flashing on the monitor.

After 3 - 4 seconds the monitor will trigger. However, if the person sits back down the light will switch off and the monitor will not transmit.

# Advanced settings CL4A-2212-EU MKII

## Mini Chair Leaving Monitor



Any questions? Call us on free phone 0800 387 397

It is possible for the monitor to light up a different key on the Pager or SignWave. This allows more than one chair leaving monitor to be used on a SA3000 system.

Move the relevant key to the right .

Press the test button and check the correct event is received by the Pager or SignWave.

**Key 7 must be left on.**

The diagram shows four keyswitches, each with a vertical column of 8 keys labeled 1 through 8. Above each keyswitch is an icon: a keypad, a person, a house with a car, and a flame. Red arrows point to the right of each keyswitch, indicating that key 7 is moved to the right position. Each keyswitch has a vertical column of 8 keys labeled 1 through 8.

### Changing the system channel code

**NOTE.** In most cases it is not necessary to change the system code. However, when one or more systems are in close proximity, system codes can be used to avoid interference from other SA3000 systems using up to a maximum of 16 channels.

The monitor is supplied with no system code switches set (system code 1). For reference this is the factory setting should you need to re-set the unit.

System codes can be set using key switches 1 - 4.

The diagram to the right shows the 16 possible combinations.

**KEY 7 MUST BE LEFT ON**

Be sure that the same system code is set on the receiver to be used and any other monitoring options in that system.

The diagram shows 16 keyswitches, arranged in two rows of 8. Each keyswitch has a vertical column of 8 keys labeled 1 through 8. Key 7 is always lit in every combination. The combinations are numbered 1 through 16.