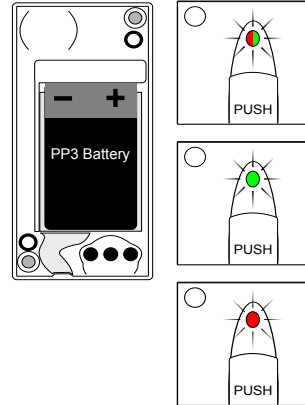


Magnetic Activation

Any questions? Call us on free phone 0800 387 397

Configuration switches shown with cover removed. Do not alter these without referring to page 2

1. Install a 9 volt PP3 alkaline or lithium battery making sure to observe the correct polarity.



When a battery is first fitted the indicator light will flash red then green a few times then light solid green & pause briefly.

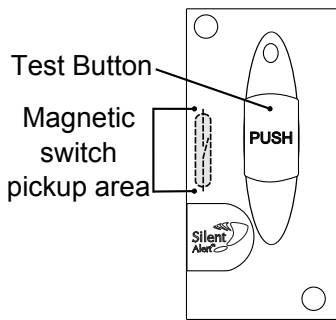
The light will then will flash green several times to show the battery voltage.

9 flashes = 9Volts in the battery.

If the light flashes red at this point the battery is flat and will need to be replaced.

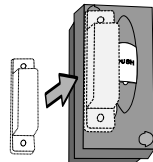
To repeat the battery check remove the battery, press the test button then re-insert the battery to start the sequence again.

2. The monitor is activated using an internal reed switch and a magnet.



To test the unit press the button on the front of the unit.

Alternatively the supplied magnet can be used to trigger the unit by swiping it through the pickup area.

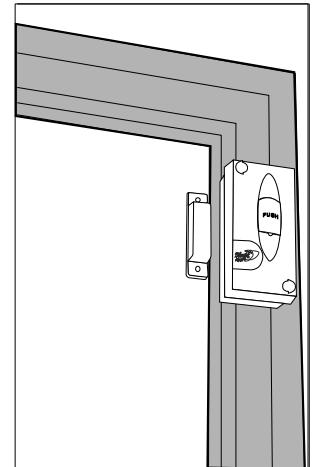
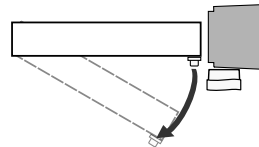


NOTE* The magnet must pass within 1cm of the pickup area to activate the unit.

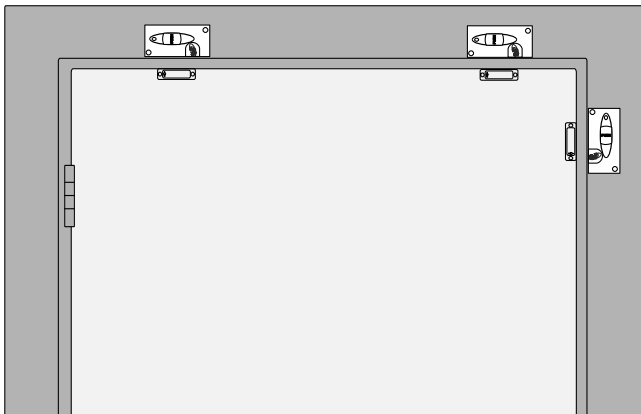
- 3.

Secure the Mini Monitor to the door frame as close as possible to the edge of the door using the supplied screws.

The Magnet must pass within 1cm of the pickup area to trigger the unit.



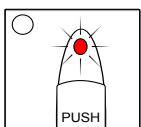
- 4.



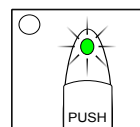
We recommend mounting the monitor opposite to the door hinge. The magnet does not need to be in close proximity to the pickup area when the door is closed as the unit is triggered when the magnet passes through the pickup area.

The magnet needs to pass within 1cm of the pickup area as the door is opened. It is possible to mount the monitor in a variety of positions as shown in the diagram. Experiment to find the best position before fixing to the door frame. Once the optimum position has been established the magnet should be secured to the door frame using the sticky pad or screws provided.

Deactivating & reactivating the door monitor



Press and hold the test button until the light flashes red, then release. This will deactivate the door sensor.



Press and hold the test button until the light flashes green, then release. This will reactivate the door sensor.

